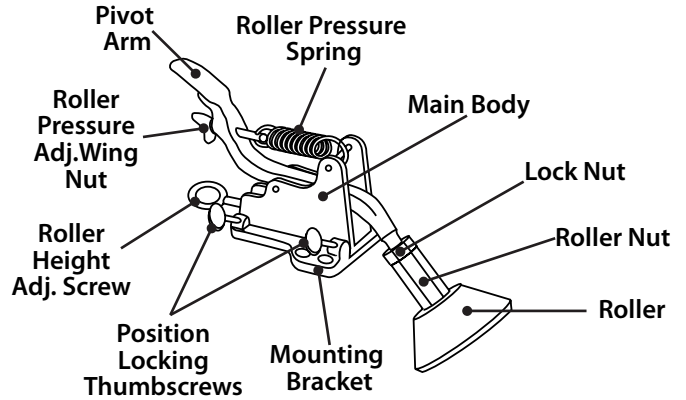


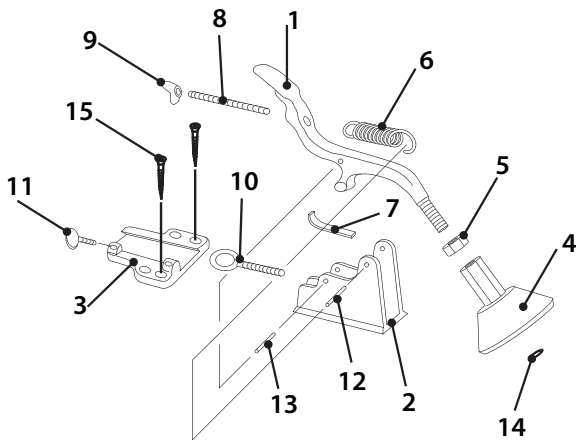
Yellow BOARD MATE Instructions

BOARD MATES are made from die-cast aluminum and feature non-marring yellow neoprene rubber wheels. Because the wheels turn clockwise only, they function as anti-kickback and holddown devices. You can mount these to most fences that are at least 3" high x 1" or wider. Each Board Mate has a mounting bracket, main body and a roller. The main body has a pivot arm which accepts the roller, a housing which contains the pivot point and a roller pressure spring.

CAUTION: Make sure the power supply is disconnected on your power tool(s) or machinery before making any adjustments. Don't use any tools with out the proper safety guard(s) in place or without reading the instruction manual that came with the unit. Always wear the proper eye, ear and respiratory equipment when using power tools.



BOARD MATES PART LIST



- | | |
|--------------------|--------------------------------|
| 1 PIVOT ARM | 9 WING NUT |
| 2 HOUSING | 10 ADJUST ROD |
| 3 MOUNTING BRACKET | 11 THUMBSCREW 1/4" - 20 X 3/4" |
| 4 ROLLER (YELLOW) | 12 ROLL PIN 5 X 20MM |
| 5 LOCK NUT | 13 PIVOT PIN 6 X 20MM |
| 6 SPRING | 14 EXIT RETAINING RING 9MM |
| 7 SHOE | 15 WOOD SCREW #10 X 1 1/2" |
| 8 TIE ROD | |

ASSEMBLY AND INSTALLATION

The BOARD MATES come partially assembled, some assembly and adjustment are required depending on your machine using figure 3 for general reference. The brackets can be installed on an auxiliary wood fence (not included) or on a sliding track (not included) if so desired. If using a track, you must mount the BOARD MATES to a mounting block for correct operation.

WARNING

Read and Understand your machines operators manual before moving forward with this manual, you must know your machines limitations before proceeding.

CAUTION: NO ANTI-KICKBACK DEVICE WILL MAKE YOUR MACHINE COMPLETELY SAFE!

Make Sure your machine is unplugged and the saw blade is at a complete stop before you install or adjust the BOARD MATES. Otherwise serious injury could occur.

CAUTION: A roller nut that is not properly threaded on the pivot arm far enough or a loose lock nut could render the BOARD MATE hold down device useless and could cause personal injury.

Assembling the Board Mates

Refer to parts list for number references

Step 1

Unplug your machine

Step 2

Thread the lock nut (5) onto each pivot arm (1)

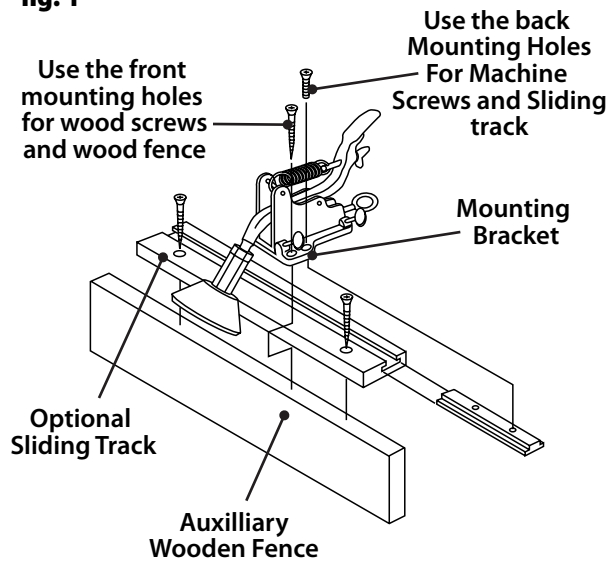
Step 3

Thread the roller (4) onto each pivot arm no less than 1/2", and tighten the lock nut (5) against the roller nut (4).

Step 4

Slide the housing (2) into the mounting bracket (3) and tighten the thumbscrews (11).

fig. 1



For Installation Refer to fig. 1

Step 1

Make an wooden auxilliary fence that is about 3" tall x 1" thick and is the length of your machine.

Step 2

Mount the fence to your machine with counter-sunk screws.

Step 3

Position the mounting bracket on the auxilliary fence so it won't protrude into the path of your stock piece.

Step 4

Position the rollers so they are not closer than 1/2" to the front and rear of the saw blade.

Step 5

Position the mounting bracket to the left or right side of the blade, making sure the rollers never contact the blade.

Step 6

Mark the front screw locations and drill the pilot holes into the wood fence for the wood screws (rear holes are for the optional tack) See fig. 1

Step 7

Install the mounting bracket with the provided wood screws.

SAFETY, BASIC OPERATION AND GENERAL MAINTENANCE

BOARD MATE Safety and Basic Operation

BOARD MATES assist the stock feeding process by maintaining a consistent pressure against the table top surface, and the fence.

- Position the main body in or out to align the rollers to the stock piece being used, then tighten the position locking thumbscrews.
- Adjust the roller nut, lock nut and the thumbscrew so the height of the roller is approximately 1/8" less than the thickness of the stock piece.
- Adjust the roller pressure adjustment wing nut, so the roller applies firm pressure to the stock piece. Be sure not to apply too much pressure against the stock.
- **MAKE SURE THE BOARD MATES DO NOT CONTACT THE BLADE OR CUTTERS AT ANYTIME.** Always be sure the blade has come to a complete stop before making any adjustments.
- Keep hands away from cutting tools.
- Feed the stock through evenly and smoothly.

General Maintenance.

Your **BOARD MATES** are made for easy operation and dependable service. However, as with most tools, you may need to periodically inspect and clean the units from time to time.

NEVER lubricate the **BOARD MATE** parts. Oil tends to attract foreign materials and sawdust which will likely jam the **BOARD MATE** mechanisms or possibly stain your workpiece.

ALWAYS make sure the jam nuts (5) and the position locking thumbscrews (11) are tight, and the **BOARD MATES** are correctly adjusted.

Trouble Shooting Tips

Problem:

the **BOARD MATE(S)** do not clamp down on the stock as it should, the pivot arm locks or binds, or the roller tension does not adjust correctly.

Solution(s):

- Refer to the Safety Section of the instructions and re-adjust the **BOARD MATE(S)**.
- Remove and clean the threads of the adjusting screws and thumbscrews. Replace any stripped adjustment screws and re-adjust unit.
- Depress the pivot arm and remove the shoe. Clean out any foreign materials that may be preventing the shoe from sliding inside the housing.
- Replace the shoe if it is worn out or broken.

Problem:

The **BOARD MATE** roller does not lock.

Solution(s):

- Incorrect roller, replace with correct roller.
- The roller is broken, Replace the roller with a new one. **DO NOT** rebuild the roller.