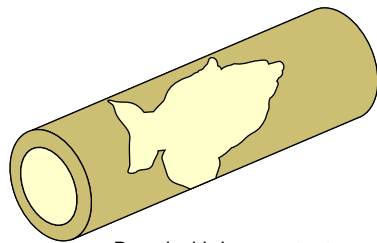


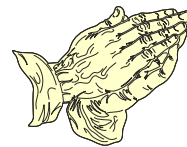
Praying Hands Kit Instructions

Kit components

- 1: 1 x Bethlehem Olive Wood Barrel with laser cutout
- 2: 1 x Holly Wood Hands laser cutout



Barrel with laser cutout



Praying Hands Cutout

Step 1:

Remove all components from the plastic bag and place on a clean work surface. Please note that the components are small and you can loose them quite easily. The parts are also fragile and should be handled with care.

Step 2:

Take the barrel with the laser cutout and slide the brass tube(27/64) into it. **Please do not use any glue** at this stage, this is only to assist you with the assembly process.

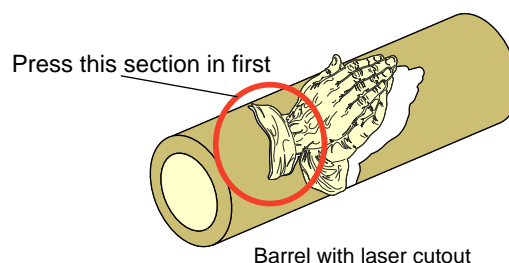
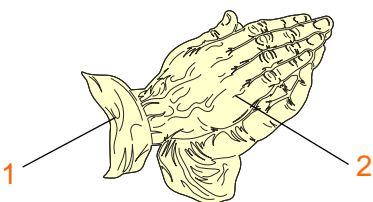
Step 3:

There are two ways of putting this kit together.

1st method :

Take the hand cutout and press it into the corresponding opening in the BOW barrel by pushing section **Nr. 1** into the hole first and then the rest of the hand **Nr. 2**.

Once the hands starts to go into the opening you can use a small piece of wood/penblank to push it completely into position.



Step 4:

2nd Method

Take the hand cutout and break the sleeve section (Nr 1) off. See [illustration 1](#).

Now that you have two pieces, take hand section (Nr 2) and press it into the corresponding opening in the BOW barrel. Now follow with the sleeve section (Nr 1) and press that into its corresponding opening.

Once the inlay starts to go into the opening and all pieces are in place you can use a small piece of wood/penblank to push it completely into position.

Never force anything into place

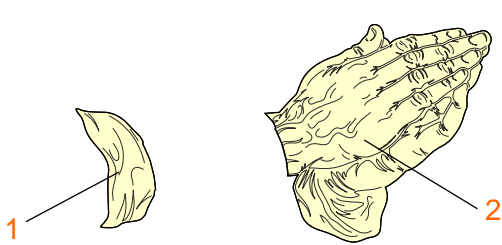


Illustration 1

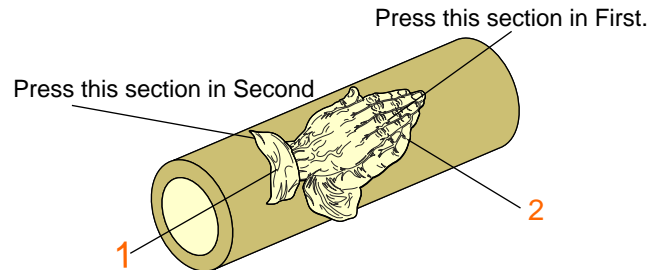


Illustration 2

Step 5:

After all the inlay pieces are in place **REMOVE THE BRASS TUBE** from the barrel and then use small amounts of thin CA glue to secure all the pieces into place. Please **do not** soak the whole inlay with thin CA, try to keep the glue to the outer edges of each inlay piece and not in the laser detail lines which will be filled with black dust while turning and finishing the pen.

Step 6:

Cut the barrel to length but **do not use a Barrel trimmer** it will destroy/break the barrel and all your hard work. Use a disk sander or any other method that will not destroy your blank. Now you can glue the brass tube into place with a glue of your choice and let it dry completely before turning the blank.

It is important to sand the barrel smooth before you are going to use a skew or any other turning tools.

After the barrel is sanded smooth blow the sanding dust out of the laser detail lines and rub some black/dark wood dust into those detail lines. Use thin Ca glue over the whole inlay to secure all pieces into place before turning the barrel to size.

While turning the barrel to size you will notice that some of the laser detail lines will need some more dust filling just repeat filling it with dust and cover with thin CA and continue turning.

Good luck and if you have any questions please do not hesitate to contact me by email or phone. info@lazerinez.com Tel: 770 891 12301