

Big Sweep

Lathe Dust Catcher System

Version 1.0

Safety First



Disconnect saw from power source before fitting or removing insert.



Always wear proper ear protection when working with machinery.



Use caution when handling sharp objects (saw blades, router bits, drill bits and so on). Use protective gloves whenever possible.



Always wear proper eye protection when working with machinery and tools.



Always wear proper respiratory protection when working near airborne dust particles.

Please read and fully understand any and all safety materials that came with your power tools or machinery before operation. Always follow all safety guidelines set in place by the power tool or machine manufacturer.

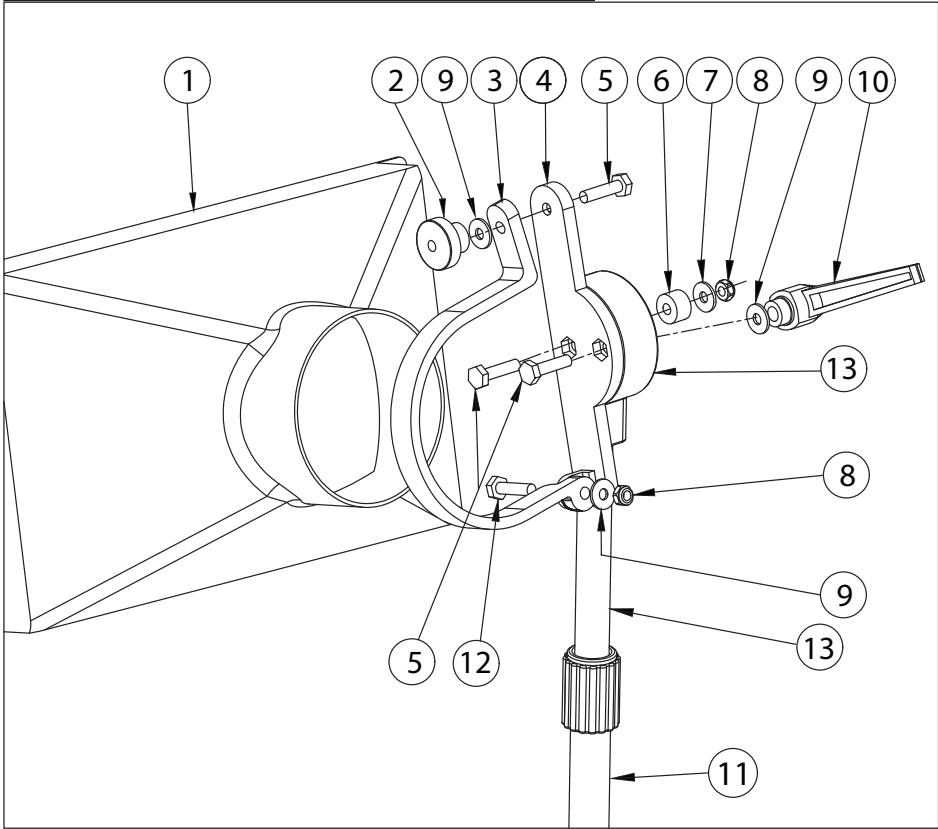


BIG SWEEP Lathe Dust Catcher System

Fine sawdust from sanding your turning projects on your lathe is not only messy, it's also a health risk that should not be taken lightly. The Big Sweep Lathe Dust Catcher System is the perfect solution. It's easy to install and even easier to adjust to the exact position you need. It works with large or small projects and can be used horizontally or vertically depending on your project shape. When not in use it can be quickly moved out of the way so it does not interfere. Works on any size lathe with a unique clamp mounting system. Minimize the dust and breathe a little easier using the Big Sweep Dust Catcher System

Big Sweep Exploded Parts View

Head Assembly



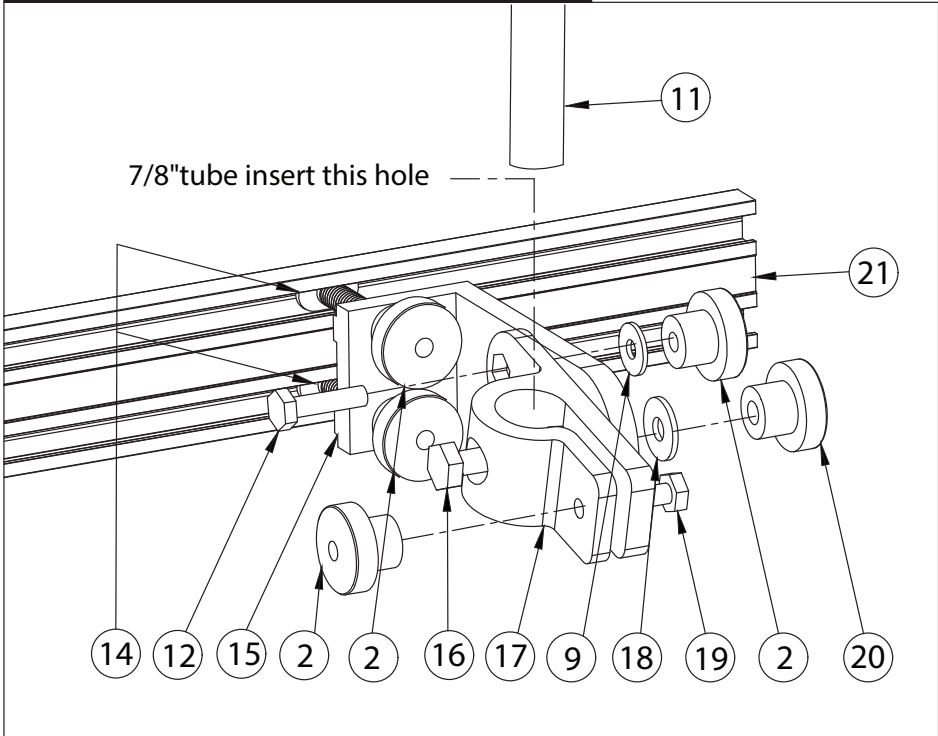
Parts List

Please note that the parts listed below reference all three diagrams shown on this page.

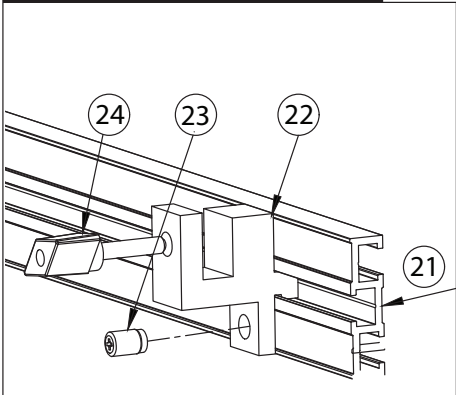
No.	Description	Qty.
1	Dust Hood	1
2	1/4"x20 round knob	5
3	C-connect clip	1
4	C-connect base	1
5	1/4"x20x1-1/2" Bolt	3
6	Black Bushing	1
7	Small Silver 1/4"Washer	1
8	1/4"x20 lock nut	2
9	Black 1/4"Washer	4
10	1/4"x20 ratchet knob	1
11	7/8" Lower Tube	1
12	1/4"x20x3/4" bolt	2
13	3/4" Upper Tube	1
14	1/4"x20x1" t-bolt	2
15	Aluminum L Base	1
16	5/16"x18x3/4" Bolt	1
17	Tube Connector Clip	1
18	Large Silver 5/16"Washer	1
19	1/4"x20x1" Bolt	1
20	5/16"x18 Round Knob	1
21	Mounting - T - Track	1
22	T - Track Mounting Block	3
23	Locking Set Screw	3
24	1-1/4" Studded T - Knob	3
25	4" Hose Clamp*	1
26	4" Flex Hose*	1

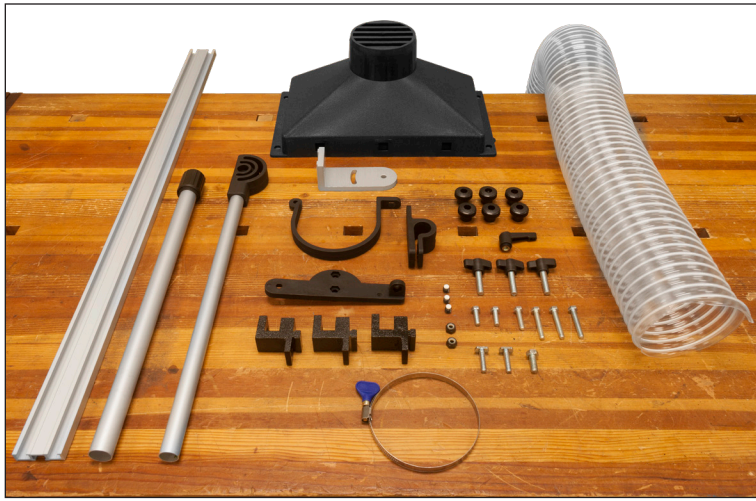
*Not shown in drawings

Track & Tube Mount Assembly



Lathe Mount Assembly

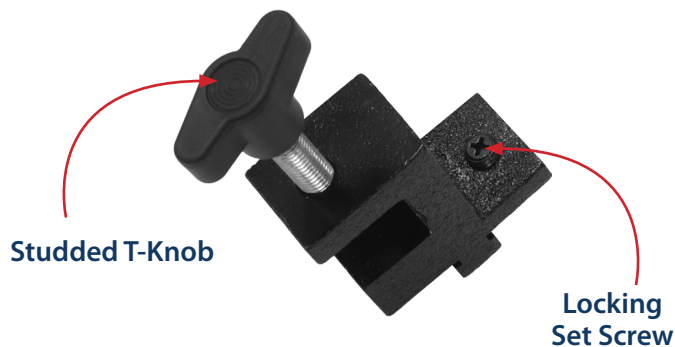




Step 1.

Part Identification

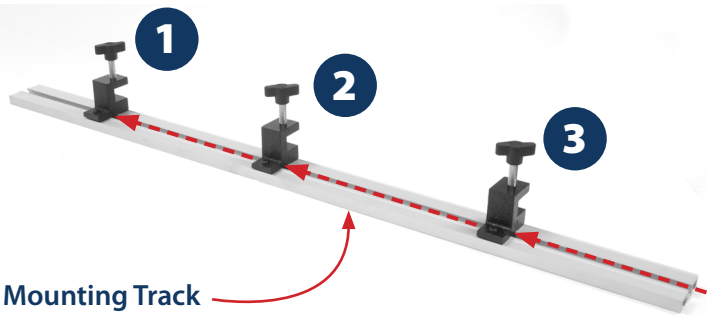
Layout out all of the parts and pieces that came with the big sweep. Using the exploded parts view on the previous page, identify each of the parts and the quantities. We will be using the reference numbers in exploded parts view throughout the instruction process.



Step 2

Assemble the Track Mounting Blocks (22)

To do this, thread a Studded T-knob (24) into the upper hole on one of the blocks as shown. Do not thread all the way through. Next, thread a locking set screw (23) into the lower hole as shown. Do not thread all the way through. Once you are completed with the first block, repeat this process for the other two blocks.



Step 3

Install T-Track Mounting Blocks

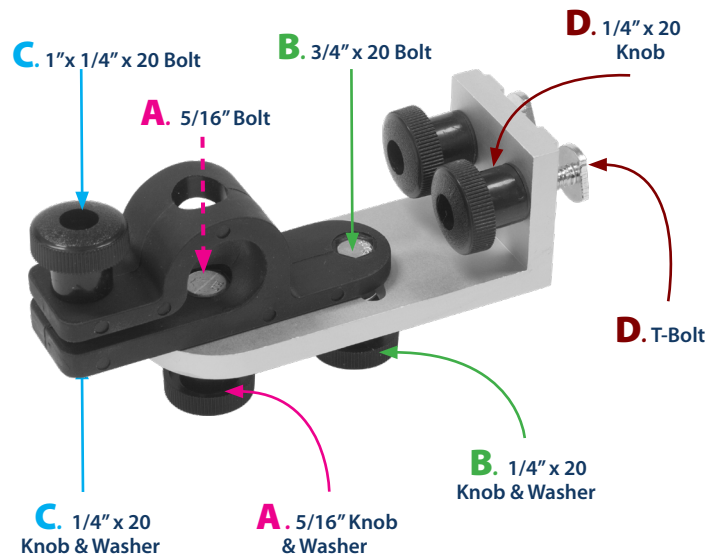
Slide the T-Track Mounting Blocks (22) on to the single slotted side of the Mounting Track (21) making sure that each block is facing the same direction as shown above.



Step 4

Attach the Track and Mounting Block Assembly

Please note that all lathes are different as far as shape. The blocks are designed to slide along the track to adapt to the shape of your lathe. Start at one end of the track and secure the block to your lathe by tightening the Studded T-knob (24). Attach and secure the next block followed by the third block. Lock the track in place by tightening the Set Screws (23) with a philips head screw driver.



Step 5

Assemble the Lower Support Bracket Assembly.

A. Insert the 5/16" (16) bolt through the center hole of the Tube Connector Clip (17). **A.** Attach the Tube Connector Clip (17) to the Aluminum L Base (15) using the 5/16" bolt (16) with washer (19) and 5/16" Round Knob (20). **B.** Using a 1/4" x 20 x 3/4" bolt (12), insert bolt as shown and secure with 1/4" x 20 Round Knob (2) and Washer (9). **C.** Next, using a long 1/4" x 20 x 1" bolt (19), insert into clamp end of the Tube Connector Clip, secure with a 1/4" x 20 knob (2). **D.** Insert a T-bolt (14) into one of the holes on the Aluminum L Base at the bottom, thread on with a 1/4" x 20 (2) round knob. Repeat this process (**D**) for the other hole at the bottom of the Base.



Step 6

Attach Tube to Connect Clip

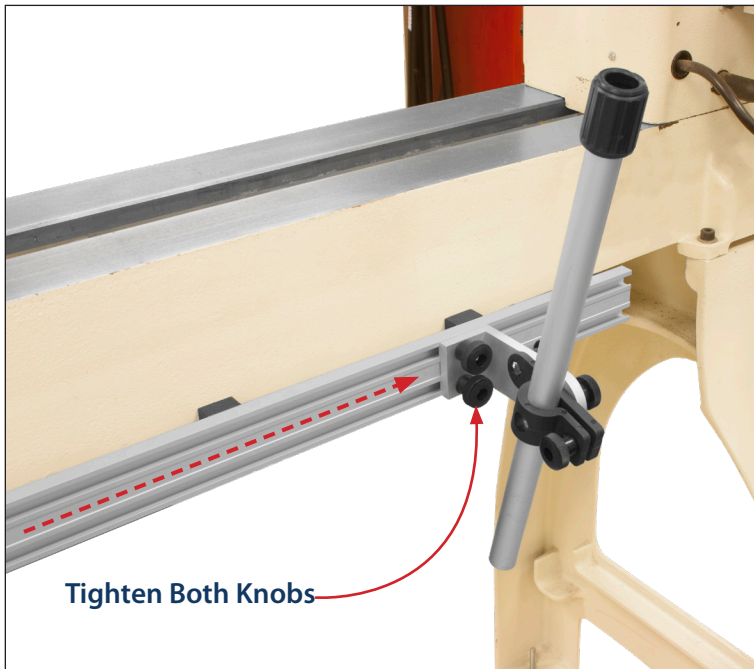
Insert 7/8" Lower Tube (11) into the Tube Connector Clip as shown in the image to the left.



Step 8

Attach C-Connect Clip to C-Connect Clip Base

Using the 1/4x20x1" Bolt (12), washer (9) and lock nut (8), attach the c-connect clip (4) to the c-connect base (3) as shown above. Adjust the tightness of the locking nut so that the c-connect clip pivots smoothly on the base.



Step 7

Attach Base Assembly

Insert the both T-bolt heads into the Mounted T-Track Rail and secure in place by tightening the two knobs as shown above.



Step 9

Attach C-Connect Base to 3/4" upper tube.

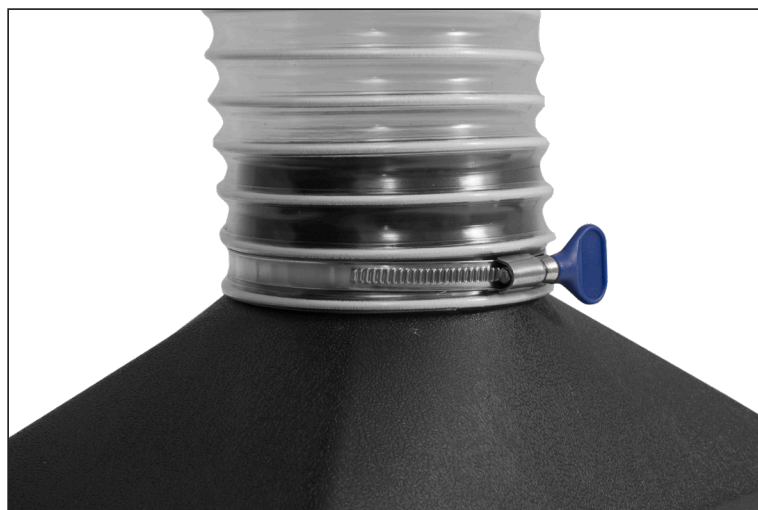
Please note that you can attach this to either side of the upper tube depending upon your preference. Insert both 1/4"x20x1 1/4" (5) Bolts through the two center holes on the c-connect base and take the c-connect assembly with the two bolts and insert into the head on the 3/4" Upper Tube. Place the black washer (9) on the outer bolt and secure with the 1/4"x20 ratchet knob (10). Place the Black Bushing (6), small silver washer (7) onto the center bolt. Secure with locking nut (8). Adjust the tightness of the locking nut so that the c-connect base pivots smoothly on the head of the 3/4" Upper Tube.



Step 10

Attach Top Assembly to Base Assembly

Insert 3/4" upper tube into 7/8" lower tube and secure in place tightening the locking collar.



Step 11

Attach Hose to Dust Hood

Attach the 4" Hose to the Dust Hood. Making sure the hose is butted up tightly against the back of the dust hood. Secure the Dust Hood with the supplied hose clamp as close to the dust hood as possible as shown above.



Step 12

Attach Hose and Hood

Place the Dust Hood and Hose assembly into the c-connect base and clip assembly so that the dust hood mouth is facing the same direction as the flat part of the c-connect base. Secure c-connect clip with 1/4"x20x1 1/2" (5) bolt, washer (9) and 1/4"x20 round knob. Adjust the location of the dust hood so that the c-connect clip is clamping around the base of the dust hood firmly.



You are now ready to start using your new Big Sweep Dust Collection System. There are many ways to adjust the Big Sweep to achieve the best suction for any project. Your Big Sweep system is designed to pivot, tilt, swivel and slide into any position you need.

CAUTION:

Never use your Big Sweep system unless all adjustable points are tight and secure. Failure to do so may allow your system to fall into your spinning project. This may result in injury or possible damage of your big Sweep which is not covered by warranty