



Peachtree
Woodworking Supply

Accessories for Woodworkers

4" DUST SEPARATOR / CYCLONE KIT

Instructions

Part # 530

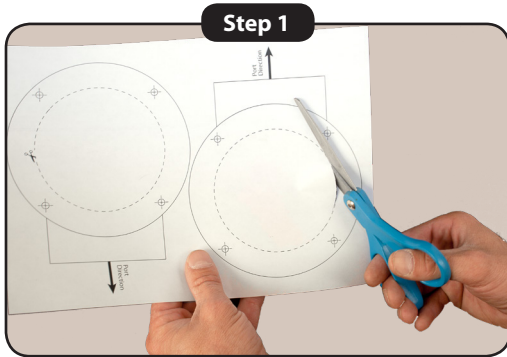
Version 1.0



CAUTION:

Please read, understand, and follow all manufacturers instructions, guidelines and owners manuals that come with your power tools. Peachtree Woodworking Supply Inc. and its subsidiaries assume no liability for accidents or injuries caused by improper use of this product.

Peachtree Woodworking Supply Inc.
P.O. Box 921487
Peachtree Corners GA 30010
www.ptreeusa.com



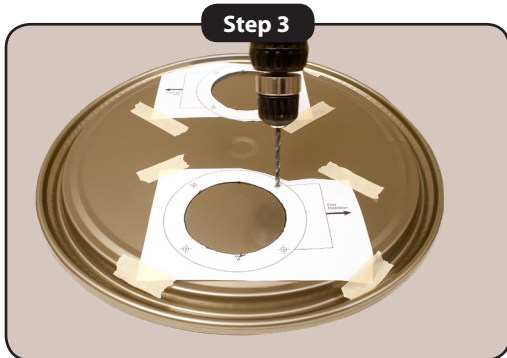
Cut out the inner circle of the template along the dotted line on both circles. Once the circles are cut out, separate the two drawings by cutting down the middle.

Note: Do not cut into either circle when separating. You will need both halves to complete this process.



Tape the two template halves onto your barrel lid (not included). Make sure the ports are facing in opposite directions. Trace the inner circles with a marker.

Note: When placing the templates on the lid you should have about 2" of space between the edge of the barrel and the outer edge of the template drawing.



With the templates still taped to the lid, drill the four holes on both template drawings. Once holes are drilled remove the templates.



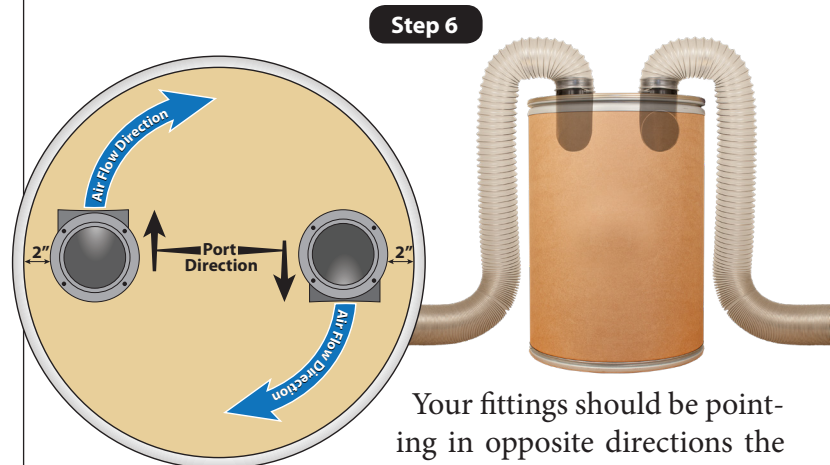
With a jig saw or any suitable cutting tool, cut the holes out of your barrel lid.

Note: On some lids it may be easier to drill a pilot hole to create a better starting point as shown above.



Secure the flanges and the ports with the nuts and bolts that are provided. Be sure the ports are facing in opposite directions as shown in the Step 6 diagram below.

Note: there are two sets of bolts to choose from. The long bolts are for thicker lids (3/4") and the short bolts are for thinner lids (1/2" or less).



Your fittings should be pointing in opposite directions the airflow as shown to the left. Place the lid on to the barrel (not included). You are now ready to attach and secure hoses and hook up to your dust collection machine.

Shop Note:

If you are using a plastic drum or container, be sure to ground the hose to prevent static build-up. Depending on the size of your drum or container, you may need to adjust the angle(s) of the elbows slightly toward the wall of the container to improve the overall performance.