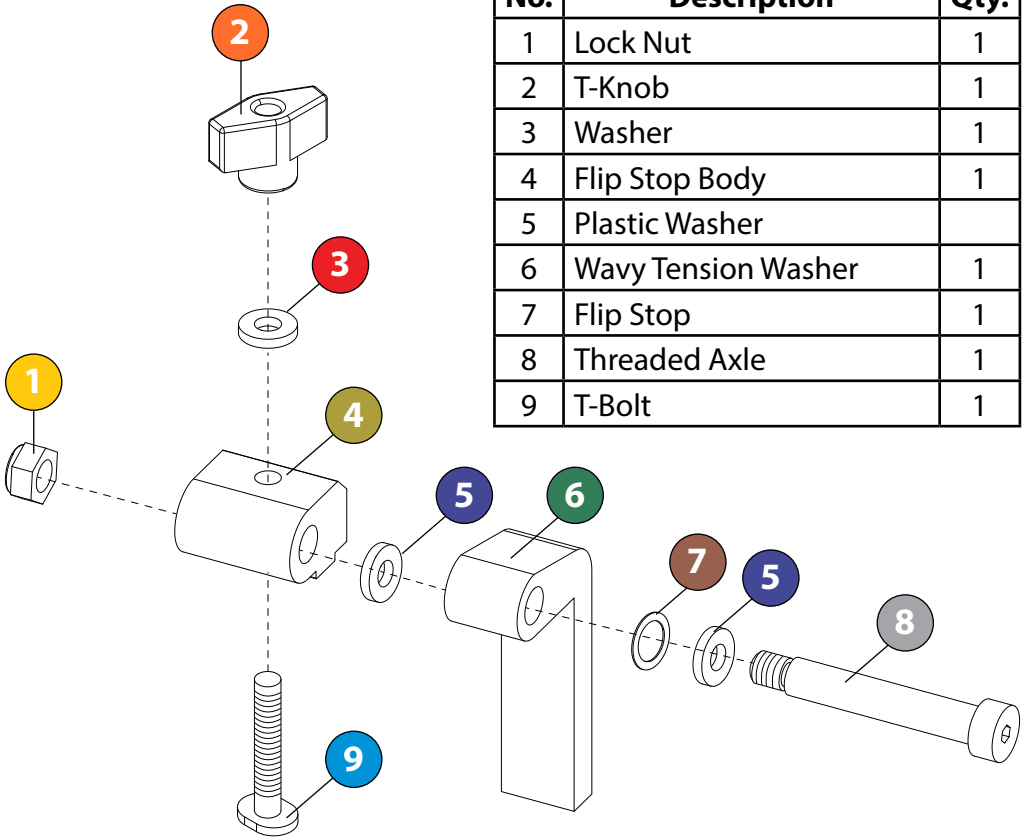


# Flip Stop Assembly

Version 1.0

No.	Description	Qty.
1	Lock Nut	1
2	T-Knob	1
3	Washer	1
4	Flip Stop Body	1
5	Plastic Washer	
6	Wavy Tension Washer	1
7	Flip Stop	1
8	Threaded Axle	1
9	T-Bolt	1



Make sure you have all the parts as shown above. Using the drawing, assemble the flip stop and hand tighten the lock nut (1) to the threaded axle (7). Once the entire flip stop is assembled, tighten the lock nut (1) with a wrench or socket. **DO NOT OVER TIGHTEN** the lock nut. You want the lock nut (1) to be snug enough to provide just the right amount of tension against the flip stop so the flip stop will stay in the up position after flipping it upward. You can adjust the lock nut (1) tightness so that the flip stop moves up and down to your liking.