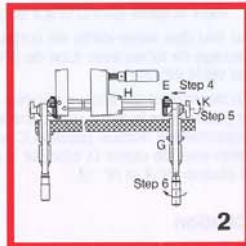
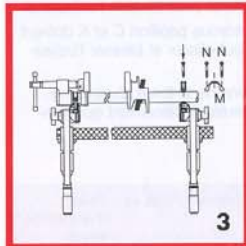


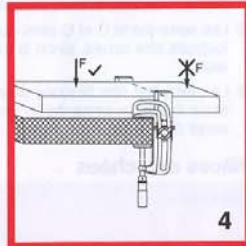
1



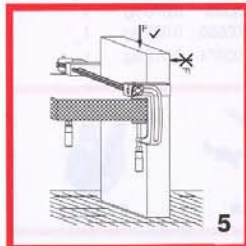
2



3



4



5



6

Directions for use

Bessey K Body Maxis™

USA

Safety precautions

Before using this equipment for the first time, read this directions carefully. No clamping tools other than those specified may be used.

The Bessey K Body Maxis™ consists of two separate "C" clamp fixtures, which include mounts for attaching either a Bessey K Body™ Clamp or 3/4" Pipe Clamp.

The Maxis™ must be mounted to a worktop which is secure against tilting. When working on clamped workpieces, they must be supported against the direction from which processing force will be applied.

Warning!

When using the Bessey K Body Maxis™, observe the following instructions without fail.

Clamping tools are not suitable for lifting, pulling or carrying purposes. They must be tightened only by hand, without any additional aids. Misuse may result in personal injury or property damage.

Please note that this Company will not accept any claims, either civil or criminal or, in particular, any product liability claims for personal injury or property damage if you fail to observe our directions for use and warning instructions.

Directions for use

1. Secure C-clamp A with connector B to the worktop (Fig. 1).
2. Push K Body™ Clamp D onto connector B until it locks home.
3. Secure connector B with wing nut C (To remove the K Body™ clamp – please open the wing nut C with 4 to 5 turns).
4. Push retainer E of C-clamp G onto the end of the rail H of the K Body™ Clamp as far as it will go (Fig. 2).
5. Secure retainer E with wing nut K.
6. Secure C-clamp G to the worktop.

Instead of the K Body™ Clamp, a tubular clamp with 3/4" tube can be used. Secure the tube with brackets M and screws N (Fig. 3).

By loosening wing nuts C and K, the K Body™ Clamp can be rotated and locked into an unlimited number of positions, either on top, in front or below the workbench surface.

Clamp the workpiece in the K Body™ Clamp D, support it on the worktop or the floor against the direction of processing force F (Figs. 4 and 5).

Caution

- Use the K Body Maxis™ only on a secured worktop. If the Maxis™ shifts or tilts, the user may sustain an injury.
- C-Clamps A and G and wing nuts C and K must always be securely tightened, otherwise the workpiece may move and the user may sustain an injury.
- The workpiece must be supported against the direction of processing force F, otherwise it may move, slowly or suddenly, and the user may sustain an injury.

Spare parts

Designation	Ref. no.	Weight kg	Packing unit
Retainer with accessories	31 00957	0,070 kg	1
Bracket (pair) with accessories	31 00958	0,030 kg	1
Connector	31 00974	0,012 kg	1

