

Safety First



Disconnect saw from power source before fitting or removing insert.



Always wear proper ear protection when working with machinery.



Use caution when handling sharp objects (saw blades, router bits, drill bits and so on). Use protective gloves whenever possible.

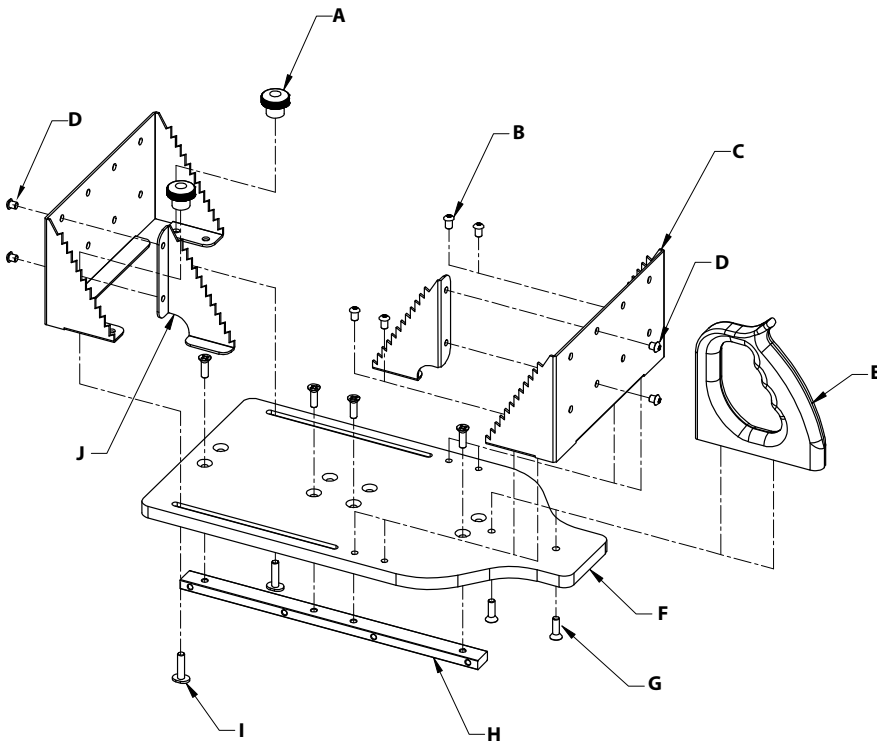


Always wear proper eye protection when working with machinery and tools.



Always wear proper respiratory protection when working near airborne dust particles.

Please read and fully understand any and all safety materials that came with your power tools or machinery before operation. Always follow all safety guidelines set in place by the power tool or machine manufacturer. The Miter Mill is designed specifically for use on a band saw only. Do not use on any other type of machinery.



AccuRight® Miter Mill™ Assembled

Your AccuRight® Miter Mill™ comes completely assembled. In the event that it does not, please refer to the exploded view drawing and assemble the unit as needed. Below is an image of the AccuRight® Miter Mill™ completely assembled

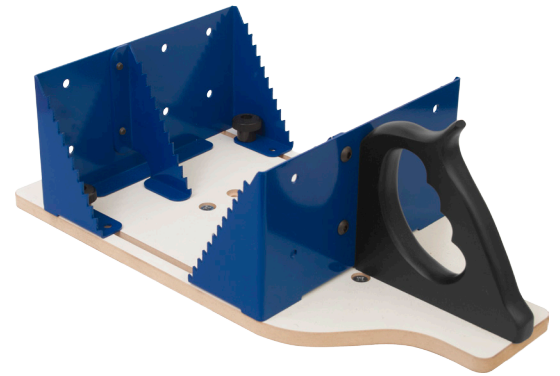
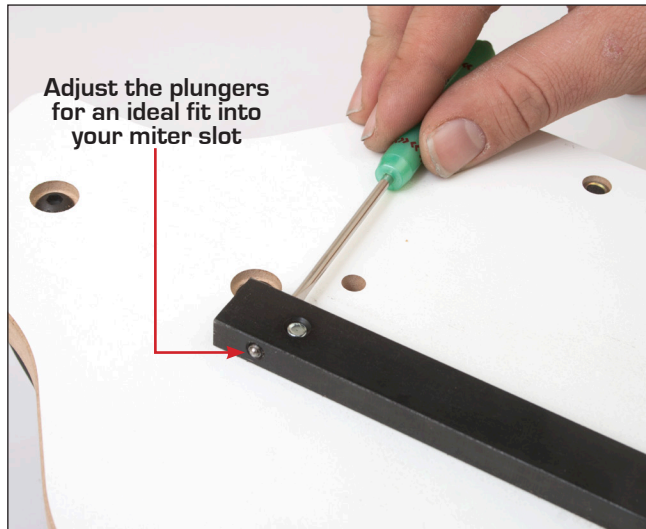


Figure	Part Description	Qty.
A	1/4" x 20 Round Knobs	2
B	1/4" x 20 x 3/8" Socket Buttonhead Bolts	4
C	Heavy Gauge Steel V-Cut Jaw	2
D	1/4" x 20 x 1/4" Socket Buttonhead Bolts	4
E	Molded Grip Handle	1

Figure	Part Description	Qty.
F	MDF Laminated Platform Base	1
G	1/4" x 20 x 3/4" Socket Buttonhead Bolts	6
H	Steel Miter Bar with Adjustable Plungers	1
I	1/4" x 20 x 1" Bolts for Round Knobs	2
J	Center V-Cut Jaw Plate	2

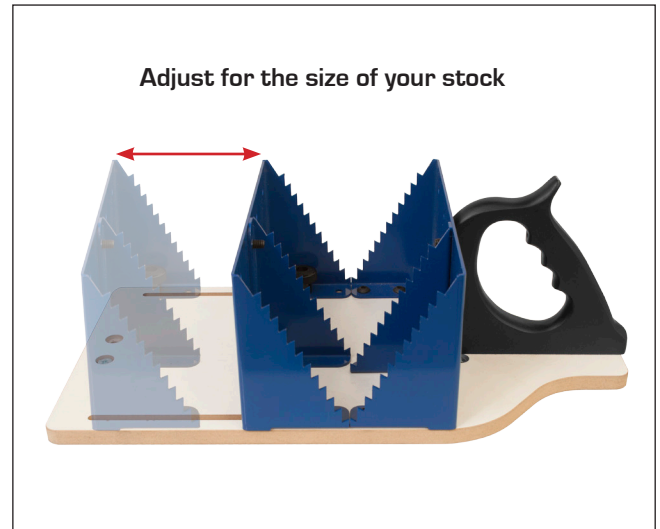
Adjust Miter Bar Fit

To adjust the fit of the miter bar, loosen or tighten the set screws on the side of the miter bar. By doing this, the spring loaded plungers on the miter bar can be adjusted to just the right fit for your band saw miter slot. You will want the fit to be so it is as smooth as possible with very little "play" so you can achieve optimal cutting results.



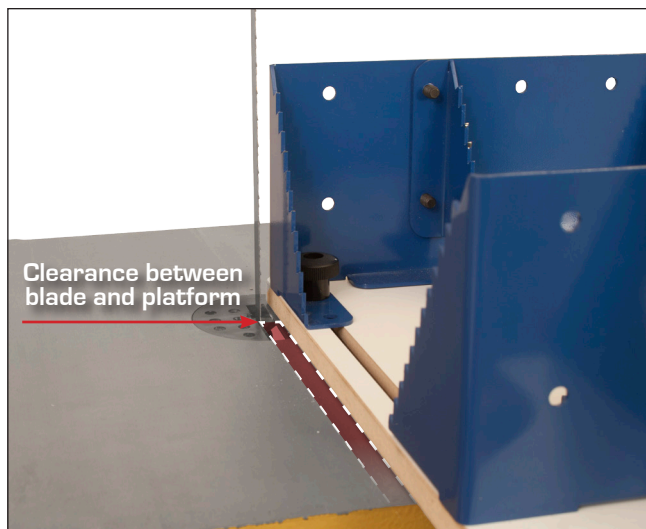
Adjustable V-Cut Jaw

Depending on the size of your stock that you want to cut, you will need to set the adjustable jaw to achieve the proper fit. To do so, loosen the round knobs and slide the jaw front or back so your stock is resting in the v-cut jaws approximately 1/8" off of the platform. Always be aware of any irregularities such as twists or knots, making sure the weight of the log is on the v-cut jaws and that the twists or knots do not contact the platform.



Check Cutting Line of Miter Mill

Before making an actual cut, check to see the the Miter Mill platform does NOT come in contact with the blade as it is being fed through the miter slot. If adjustments need to be made, loosen and remove the miter bar. Re-attach the miter bar to the second set of holes on the base of the Miter Mill platform.



Place, Align and Cut

Before making the cut, make sure that there is enough clearance for the stock to pass under the band saw blade guides. With the correct position of the jaws set, position the stock to the desired width of cut you need. Once aligned and the stock is NOT touching the blade, turn on the band saw. While holding the log down and keeping your fingers clear of the blade as shown below, slowly feed your stock through the blade.

