

PROGRIP

STRAIGHT EDGE GUIDES & ACCESSORIES

Straight Edge Guide Instructions

Version 3.1



Safety First



Disconnect saw from power source before fitting or removing insert.



Always wear proper ear protection when working with machinery.



Use caution when handling sharp objects (saw blades, router bits, drill bits and so on). Use protective gloves whenever possible.



Always wear proper eye protection when working with machinery and tools.

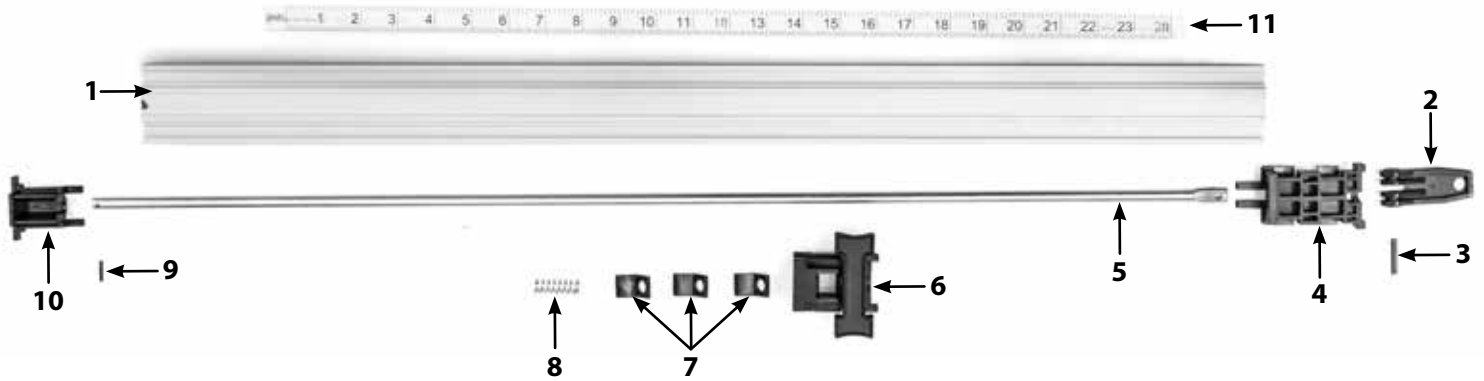


Always wear proper respiratory protection when working near airborne dust particles.

Please read and fully understand any and all safety materials that came with your power tools or machinery before operation. Always follow all safety guidelines set in place by the power tool or machine manufacturer.

PRO-GRIP™ CLAMP Maintenance

These Instructions are for basic maintenance and cleaning of your PRO-GRIP™ Straight Edge Clamp.



Parts

- 1. Clamp Body
- 2. Clamp Lever
- 3. Lever Pin
- 4. Fixed Clamp Head

- 5. Steel Clamp Rod
- 6. Bowtie Jaw
- 7. Steel Clips
- 8. Tension Spring

- 9. Spring Lock Pin
- 10. End Cap
- 11. Scale

Step 1



Make sure handle is in the up-right and unlocked position.

Step 2



While firmly holding clamp, push the end cap out, up and off the clamp body.
Note: end cap is under spring tension.

Step 3



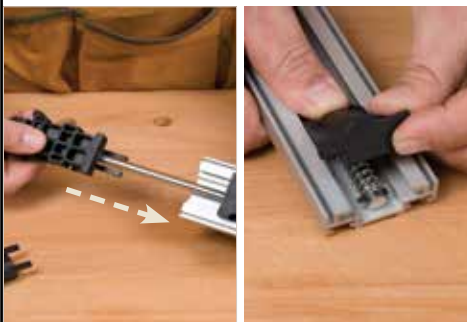
Slide the entire clamping assembly and steel clamp rod from the clamp body

Step 4



With a soft cloth, clean the clamp with warm, soapy water.

Step 5



Slide the entire clamping assembly and steel rod back into the clamp and re-secure the end clip.

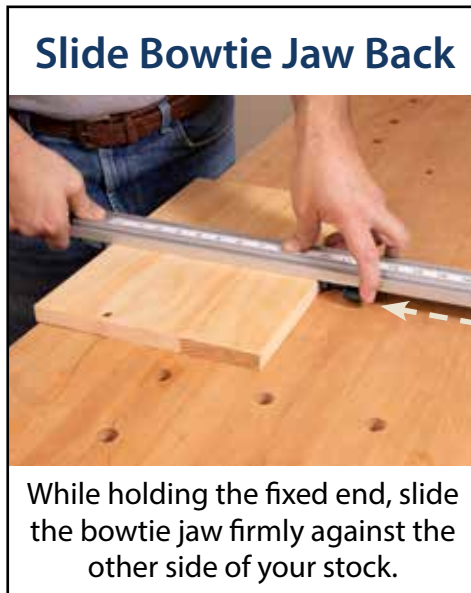
Shop Tip... To Help Prevent Glue From Sticking



Spray some household furniture polish spray on the steel rod and wipe dry to help prevent glue build up.

PRO-GRIP™ CLAMP Glue Up Method

How use the PRO-Grip Clamps for Glue Ups. The more PRO-Grip Clamps you use, the more gripping power you will achieve.



PRO-GRIP™ CLAMP Cutting Techniques

This cutting technique can be applied to circular saws for ripping or cross-cutting and routers for milling dado slots.

What you'll need...



PRO Grip Clamp, circular saw, pencil, ruler, & foam insulation board (found at most local home stores)

Place Stock on Foam



Measure and mark your stock where you would like to cut.

Measure for offset



Measure from the blade teeth to the edge of the saw base. Make a note of this measurement.

Mark the Offset



From your cut line, mark the offset measurement from your saw on to your stock.

Adjust the Clamp



Slide the bowtie jaw far enough away from the fixed end to fit your board in between the jaws.

Align the Clamp



Align the clamp edge to the offset marks on your board.

Secure the Clamp



Once properly aligned, secure the clamp to your board.

Set the Saw Depth



Set the depth of your saw to be just slightly below your board as shown above.

Make the Cut



Using the PRO Grip Clamp as your guide, plug in and power on the saw, then make the cut.