

Platform Method

Using the platform gives you complete control over flat edge turning tools like skews, parting tools and scrapers. The Quad Angle Setting Gauge (included) gives you the perfect angle settings for the four various tools that can be sharpened using this method. The Quad Setting Jig is designed to be used with 8" diameter grinding wheels.

Safety First



Disconnect saw from power source before fitting or removing insert.



Always wear proper ear protection when working with machinery.



Use caution when handling sharp objects (saw blades, router bits, drill bits and so on). Use protective gloves whenever possible.



Always wear proper eye protection when working with machinery and tools.

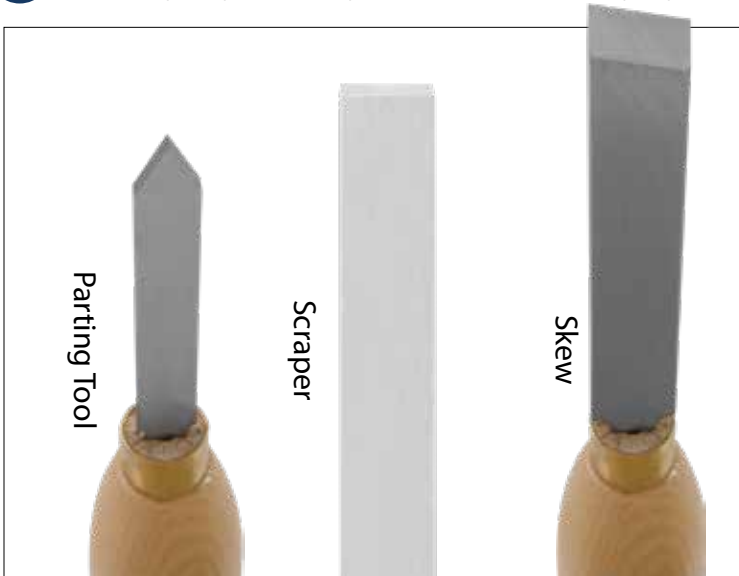


Always wear proper respiratory protection when working near airborne dust particles.

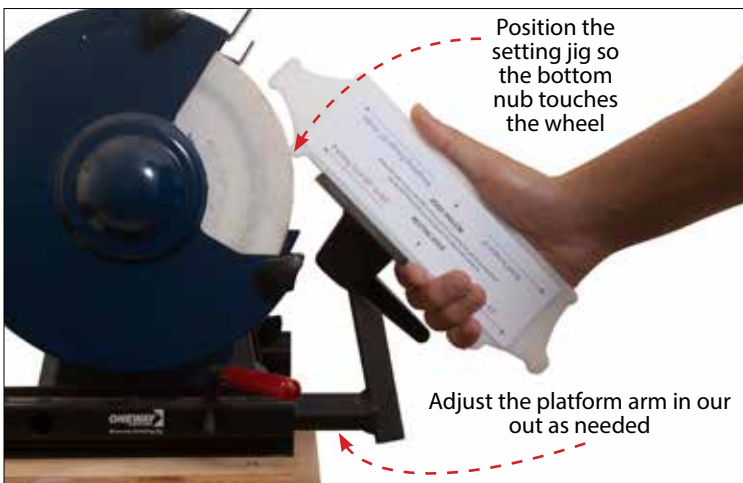
Please read and fully understand any and all safety materials that came with your power tools or machinery before operation. Always follow all safety guidelines set in place by the power tool or machine manufacturer.

Setup and use the Platform

1 Choose your tool to sharpen and the corresponding angle setting on the Quad Setting Jig

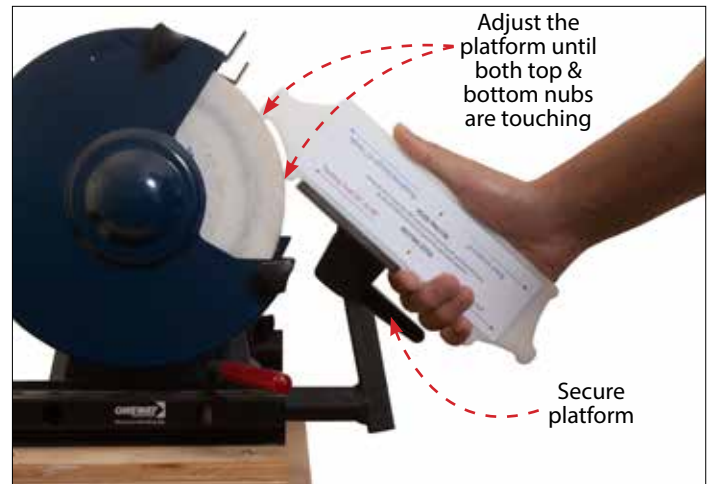


2 Adjust the platform assembly



Loosen the red lever so you can adjust the position of the platform arm in or out. Place the setting jig on the platform so the preferred RESTING EDGE is flat against the platform. Adjust the platform arm in or out until the bottom nub of the setting jig touches the grinding wheel leaving at least a 1/4" to 3/8" gap between the platform and the grinding wheel as shown above. Tighten the red lever to lock the platform arm in place.

3 Adjust the platform



Loosen the platform locking knob and adjust the platform so that both the top and bottom nubs are touching the grinding wheel keeping the RESTING EDGE flat against the platform as shown above. Once you are at the correct setting, secure the platform by tightening the platform locking knob.

Once the platform is set and secure, double check the clearance between the platform and the grinding wheel to be sure that there is a minimum of a 1/8" to 1/4" maximum gap between the platform and the grinding wheel.

SHOP NOTE

You may have to loosen the red lever and re-position the platform arm in or out to achieve the proper setting.

With the platform secure and set to the correct angle, proceed to sharpen your tool

