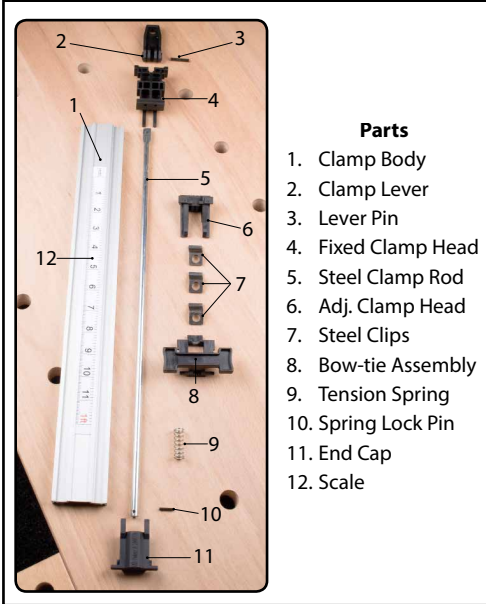


Removing The Fixed Clamp Head

These Instructions are for basic maintenance for your PRO-GRIP™ Straight Edge Clamps.



Step 1



Make sure handle is in the up-right and unlocked position.

Step 2



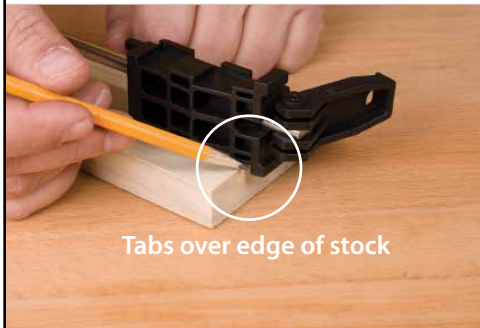
While firmly holding clamp, push the end cap out, up and off of the clamp body.
Note: end cap is under spring tension

Step 3



Slide the entire clamping assembly and steel clamp rod from the clamp body.

Step 4



Tabs over edge of stock

Place the fixed head assembly on a scrap piece of stock, with the tabs over the edge.
Note: this is done to prevent damaging the tabs.

Step 5



With a center punch, remove the lever pin from the fixed head assembly.

Step 6



Once pin is removed, slide the fixed clamp head assembly off of the steel clamp rod.

Step 7



Re-assemble the fixed head assembly - slide the fixed clamp head back onto the steel clamp rod.

Step 8



Slide the clamp lever onto flat portion of the steel clamp rod. The clamp lever and fixed clamp head should be facing the same direction.

Step 9



Place assembly on scrap stock as shown in **Step 4**. Line up holes of the lock lever and the steel clamp rod and re-install the lever pin.

Step 10



Slide all of the components back into the clamp body.

Step 11



Make sure handle is in the up-right and unlocked position.

Step 12



Slide the spring to the end of the clamping rod against the pin. Place the cut out end of the end cap onto rod behind spring.

Step 13

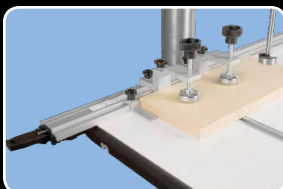


While firmly holding clamp, push the end cap out, down and snap the end cap back into place.
Note: end cap is under spring tension

PRO-GRIP™ ACCESSORIES

available at www.ptreeusa.com

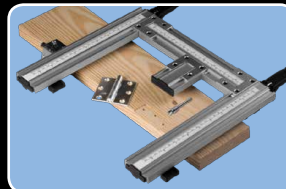
Hold Down Kit 598



90° Head 569



Hinge Mate 584



Wide Jaws 588



Hardware Kit 568



Large Handle 576



Drill Guide Kit 602



Saw Plate 565

