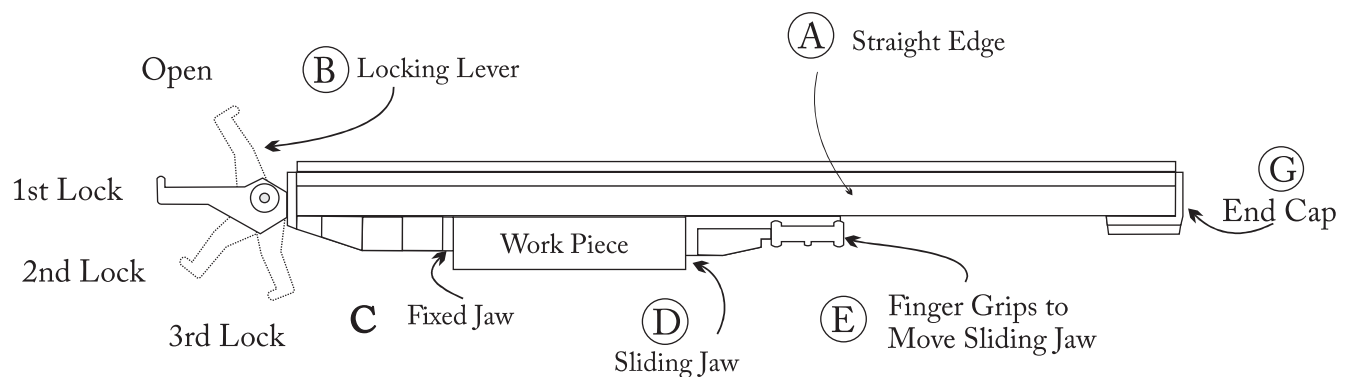


# ProGrip Straight Edge Clamp and Tool Guide

## Operating Instructions

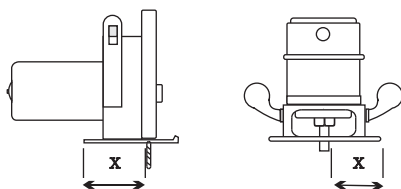


### CLAMPING

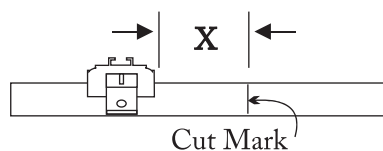
Operate clamp with the LOCKING LEVER (B). To open SLIDING JAW (D), push FINGER GRIPS (E) away from FIXED JAW (C). Place workpiece to be clamped between FIXED JAW (C) and SLIDING JAW (D). One edge of the work piece must press against the FIXED JAW (C). Pull the SLIDING JAW (D) forward with the FINGER GRIPS (E) until the SLIDING JAW (D) presses firmly against the edge of the workpiece. To lock clamp in place push the LOCKING LEVER (B) to 1st locking position. If more pressure is required use 2nd or 3rd lock.

### TOOL GUIDE

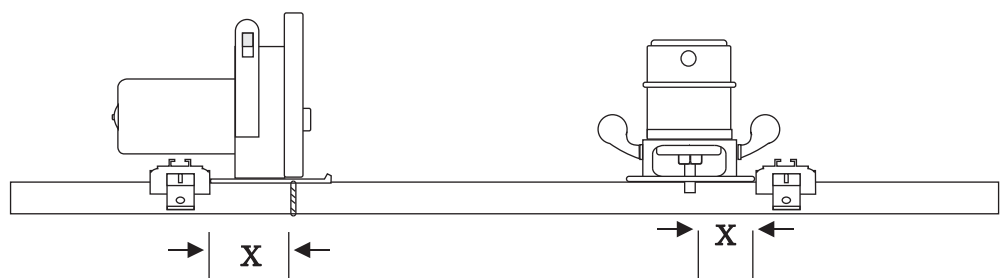
**Step 1**  
Measure distance X from edge of tool base to edge of blade or bit.



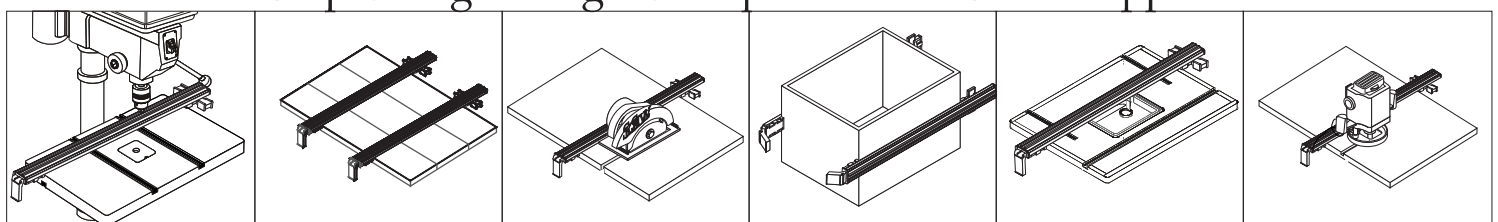
**Step 2**  
Place straight edge at X distance from cut mark.



**Step 3**  
Slide tool along the edge of ProGrip Straight Edge Clamp to make cut at the cut mark.



### ProGrip Straight Edge Clamp and Tool Guide Applications



Drill Press Fence

Glue Clamp

Saw Guide

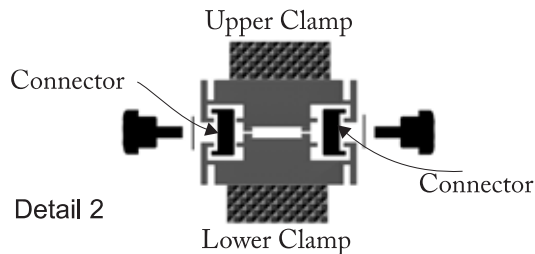
Assembly Clamp

Router Table Fence

Router Guide



## Back To Back Clamp



### ProGrip Back To Back Clamp Connectors

Any two single ProGrip Straight Edge Clamps can be converted to a Back To Back Clamp by using the Back To Back Connector Kit. Part # 594 [www.ptreeusa.com](http://www.ptreeusa.com)

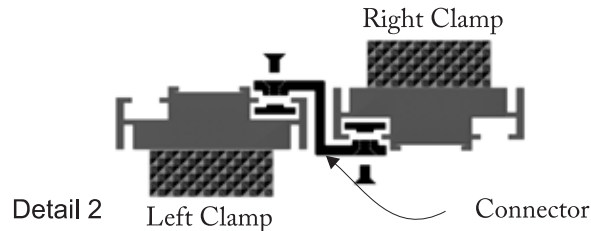
**Step 1.** Turn one clamp upside down with its locking lever opposite to the bottom clamp. (See Detail 1.)

**Step 2.** Using the Back To Back Connector Kit connect the bottom and top clamps together as shown in Detail 2.

**Step 3.** Clamp the bottom clamp to work surface and work piece in the top clamp as shown in Detail 1. (Follow general operating instructions for clamping and locking clamps in place on reverse side of these instructions.)

## Side To Side Clamp

Detail 1



### ProGrip Side To Side Clamp Connectors

Any two single ProGrip Straight Edge Clamps can be converted to a Side To Side Clamp by using the Side To Side Connector Kit. Part # 597 [www.ptreeusa.com](http://www.ptreeusa.com)

**Step 1.** With one clamp upside down and beside the second clamp (See Detail 1.)

**Step 2.** Using the Side To Side Connector Kit connect the bottom and top clamps together as shown in Detail 2.

**Step 3.** Clamp the bottom clamp to work surface and work piece in the top clamp as shown in Detail 1. (Follow general operating instructions for clamping and locking clamps in place on reverse side of these instructions.)

## Solid Side To Side Clamp

Detail 1

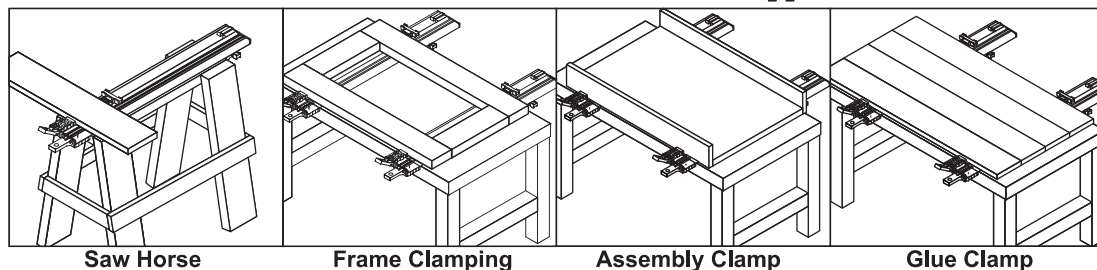


### ProGrip Solid Side To Side Clamps

ProGrip Solid Side To Side Clamps are two Straight Edge Clamps made together one up and one down to form solid Back To Back Clamp. (See Detail 1.)

**Step 1.** Clamp the bottom clamp to work surface and work piece in the top clamp as shown in Detail 2. (Follow general operating instructions for clamping and locking clamps in place on reverse side of these instructions.)

## Back To Back / Side To Side Applications



## Back To Back / Side To Side Clamping

Attach two ProGrip clamps together, back to back or side to side, and turn your work surface into a large vise, which will allow you to perform, glue ups, sanding, assembly and even routing. With the low profile jaws your work surface is never obstructed. When done remove the connectors and you have separate clamps to use as tool guides or general clamping (See sample applications to the left)

*Note: ProGrip Solid Side To Side Clamps can not be separated.*